

# **A Newcomer's Intro to QLQ**

**Linda Blum  
Quincy Library Group  
April 19, 2007**

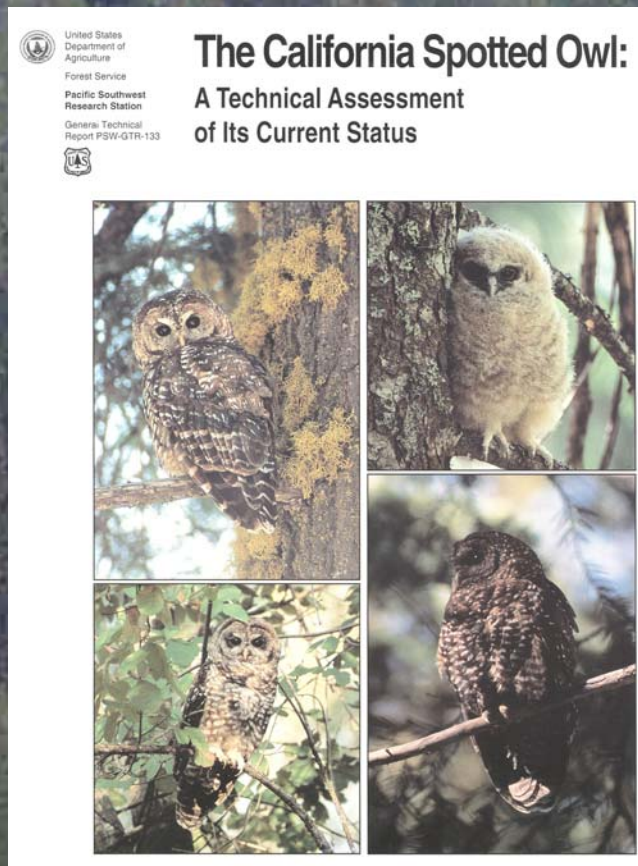


Quincy Library Group (“QLG”) came together in 1992-1993 to find a local resolution to the “timber wars” caused by the clash between clearcutting and spotted owls throughout several western states

- Northern spotted owl listed as threatened 1990
- Mexican spotted owl listed in 1992(?)
- California spotted owl not listed, but USFS mgmt changed, esp. clearcutting
- CASPO Report 1992 led to CASPO IGs in 1993
- Drought, insect outbreaks, & fires 1987-1992



# *QLG married 2 good ideas from the Forest Service*



- ⊕ 1992 CASPO Report's fuels & silvicultural recommendations
- ⊕ Lassen NF's strategic fuels treatment patterns & ecologically based rates of treatment





QLG members were concerned that overly dense, white fir dominated forest conditions like this...





And this... with accumulated surface and ladder fuel...





Would lead to this...





Or this...





We decided to get out to the woods to walk through and talk about them with our “adversaries”.



# *California Spotted Owl (CASPO) Technical Assessment Team recommended*

- “protect known spotted owl nest stands”
- “protect very large, old trees throughout Sierran conifer forests”
- “begin to cope with the excessive fuels problem”



# *Quincy Library Group Community Stability Proposal*

August 1993

Plumas, most of Lassen, Sierraville RD of Tahoe NFs

Landbase agreement: offbase, deferred, Riparian Areas,  
Spotted Owl nest sites

Timber management general sideboards  
Rotation lengths, methods, CASPO Prescription

Watershed restoration program: FRCRM work





**West Shore DFPZ-WUI  
Almanor RD, Lassen NF  
10/17/2005**

**Pileated woodpecker pair occupies a territory  
including DFPZ and bike path here.**



Battle DFPZ near Mineral, Lassen NF, 10/05/2006







McFarland Project unit on Big Creek Road, Mt. Hough RD, Plumas NF, 9/17/2003  
Forest Health Pilot project of mid-1990s, CASPO Rx, mixed conifer, anchors major DFPZ





Carman Valley meadow restoration, Tahoe NF, 9/27/2006



McFarland DFPZ unit that withstood 1999 Lookout Fire (background), Plumas  
NF.10/05/2005







Antelope-Border DFPZ after Boulder Complex Fire, Plumas NF, 8/24/2006



# 1992 CASPO Report said:

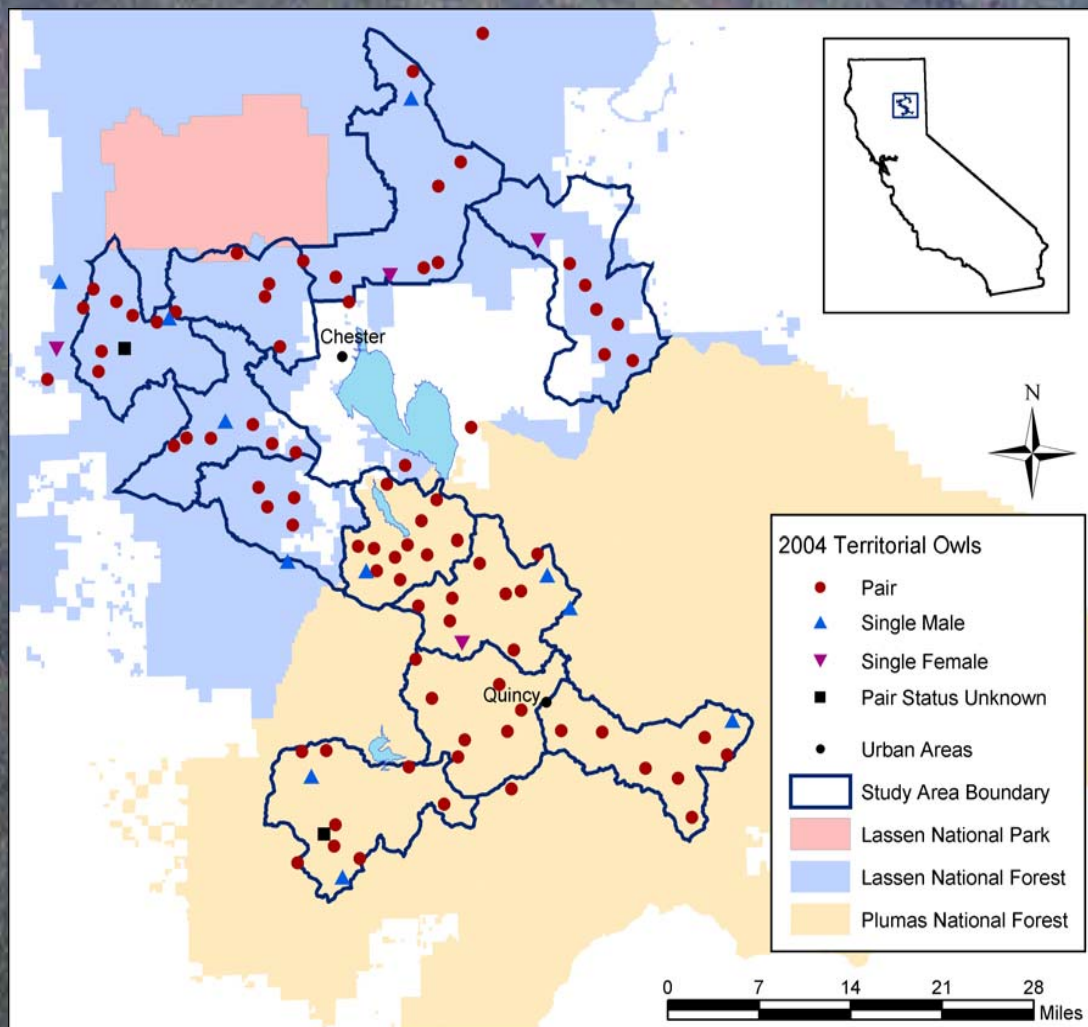
“Combining single-tree selection with group selection ... may work to maintain some vertical structure while permitting regeneration of shade-intolerant species.” (p. 271)

“One kind of structure that may have promise for production and long-term maintenance of owl habitat is a multi-aged mosaic of small, even-aged groups or aggregations ... in size from about 2 acres down to a quarter-acre, or possibly less. Probably this type of structure best approximates presettlement stand structures, thus warranting serious consideration.” (p. 271)

“Management plans should focus on addressing undesirable trends, designing potential solutions, and proceeding experimentally to implement those plans on the landscape.” (p. 273)

USDA Forest Service Gen.Tech. Rep. PSW-GTR-133






California Spotted Owl Density in Plumas-Lassen  
Administrative Study Area, 2004



# Process Failures of HFQLG

- **Economic goals of Pilot Program not met**
- **Changing directions of SNFPAs of 2001 & 2004, HFRA, etc.**
- **SNFPA's overpromising on MIS, risks**
- **Owl ecology & status no clearer today to scientists**
- **JUST NOT ENOUGH!**





**Where Is Quincy  
Library Group  
Heading?**



# Back to the Woods



North Coble DFPZ, Hat Creek RD, Lassen NF, 9/26/2006





Kybos DFPZ Project, Eagle Lake RD, Lassen NF, 10/06/2006





Bogard Aspen Enhancement Project unit 79, Lassen NF, 10/06/2006



# **Back to Washington, D.C.**

- **Report back to Congress on HFQLG Pilot**
- **Encourage public policy discussions to set sustainable future for all of us**
- **Comprehensive & integrated watershed restoration & management**
- **Funding mechanism based on beneficiaries of ecosystem services**



## ***Degraded Pre-Project Condition***





# *Last Chance Creek Pre-Project Conditions*





*Last Chance Creek, Alkali Flat, 2005*





*Last Chance Creek, Alkali Flat, May 2005*





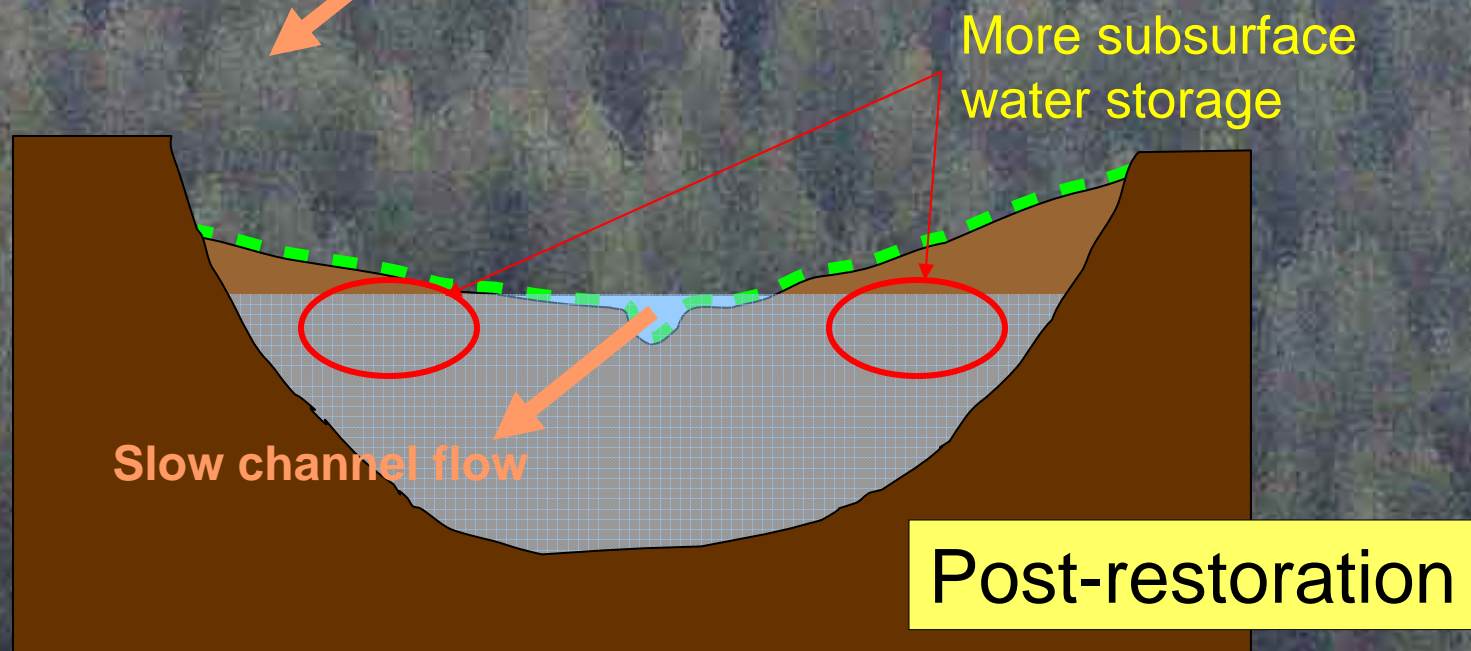
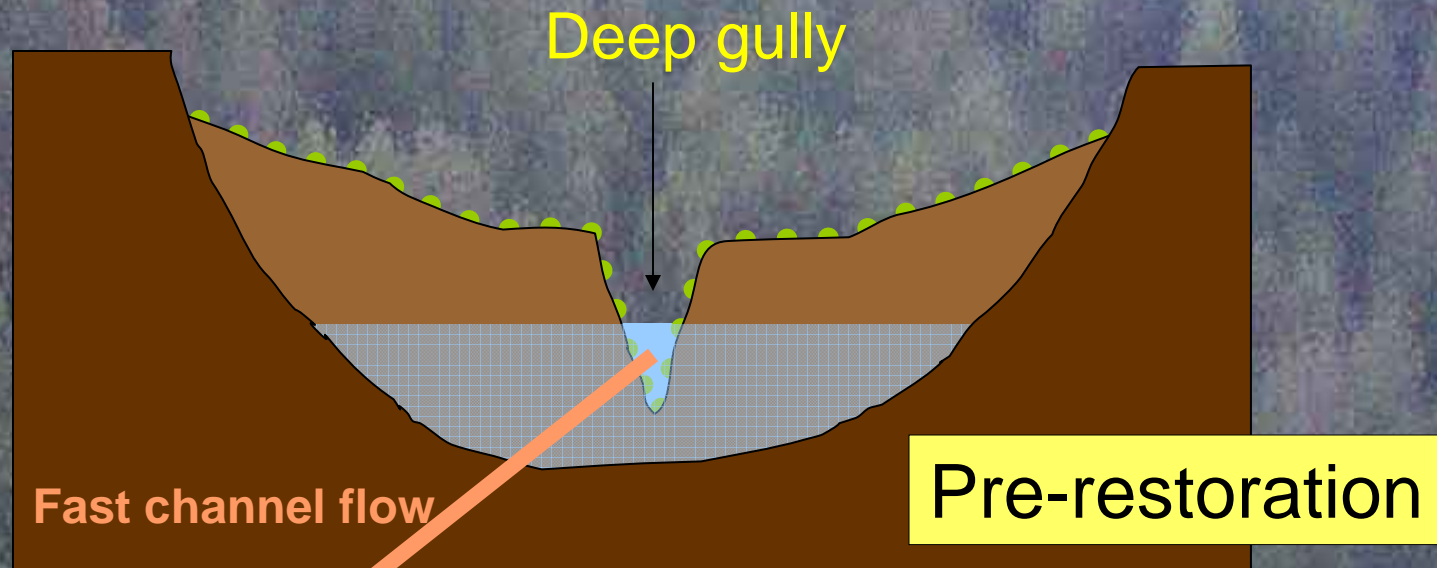
**May 2004**



**July 2001**







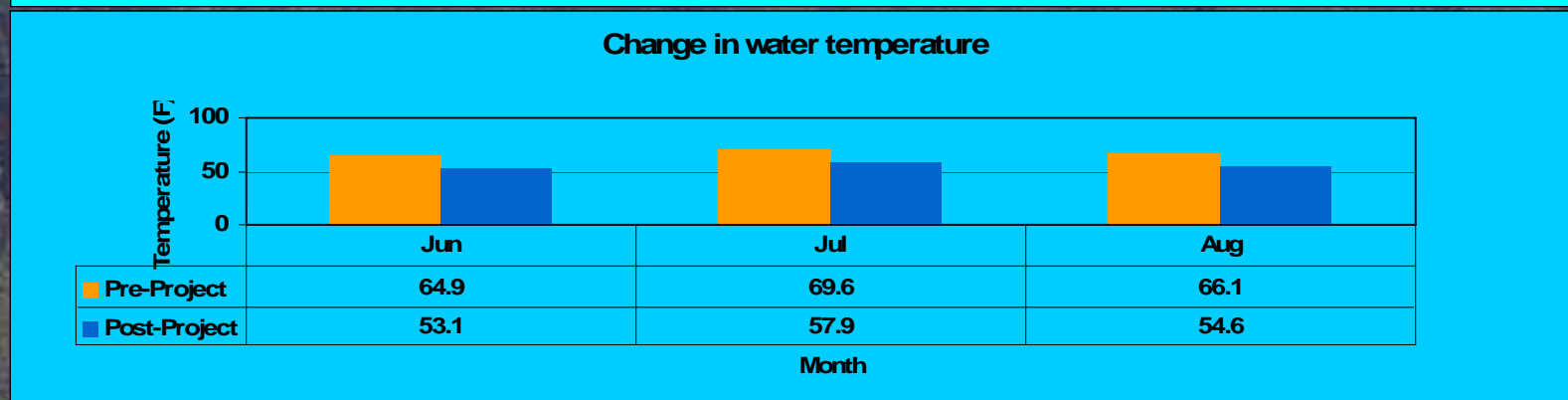
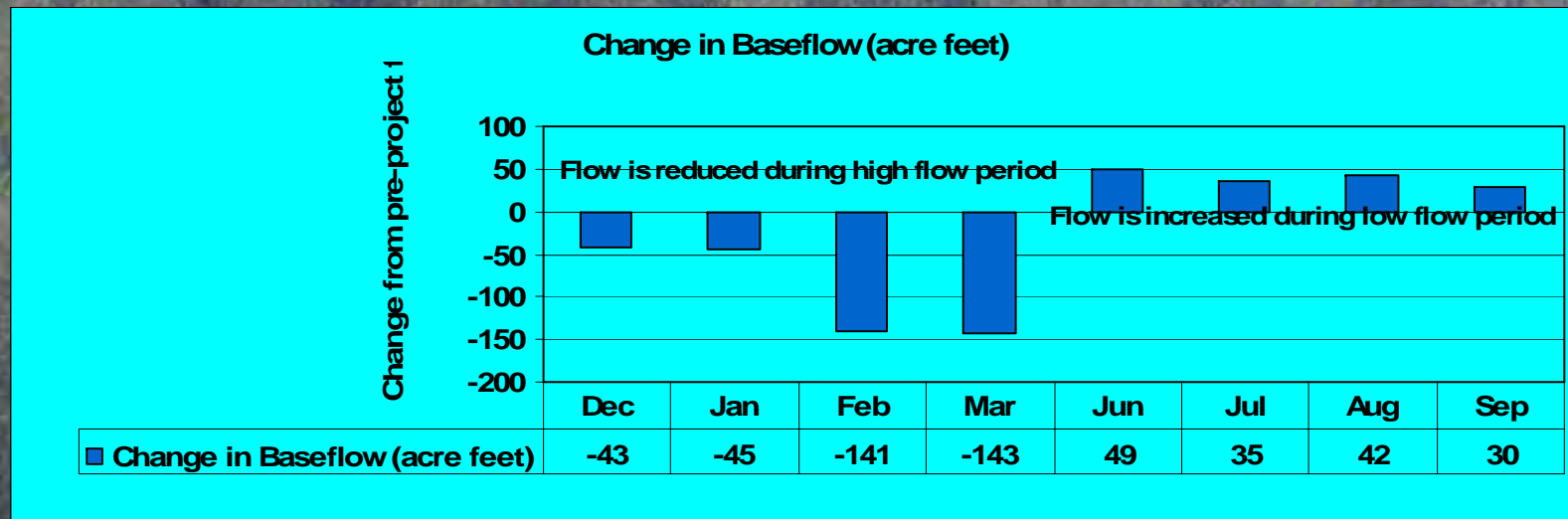


# *Last Chance Creek Project - Baseflow and Temperature*

9-Mile Stream Restoration / Meadow Rewatering Project

Calculated by California Hydrologic Research Laboratory

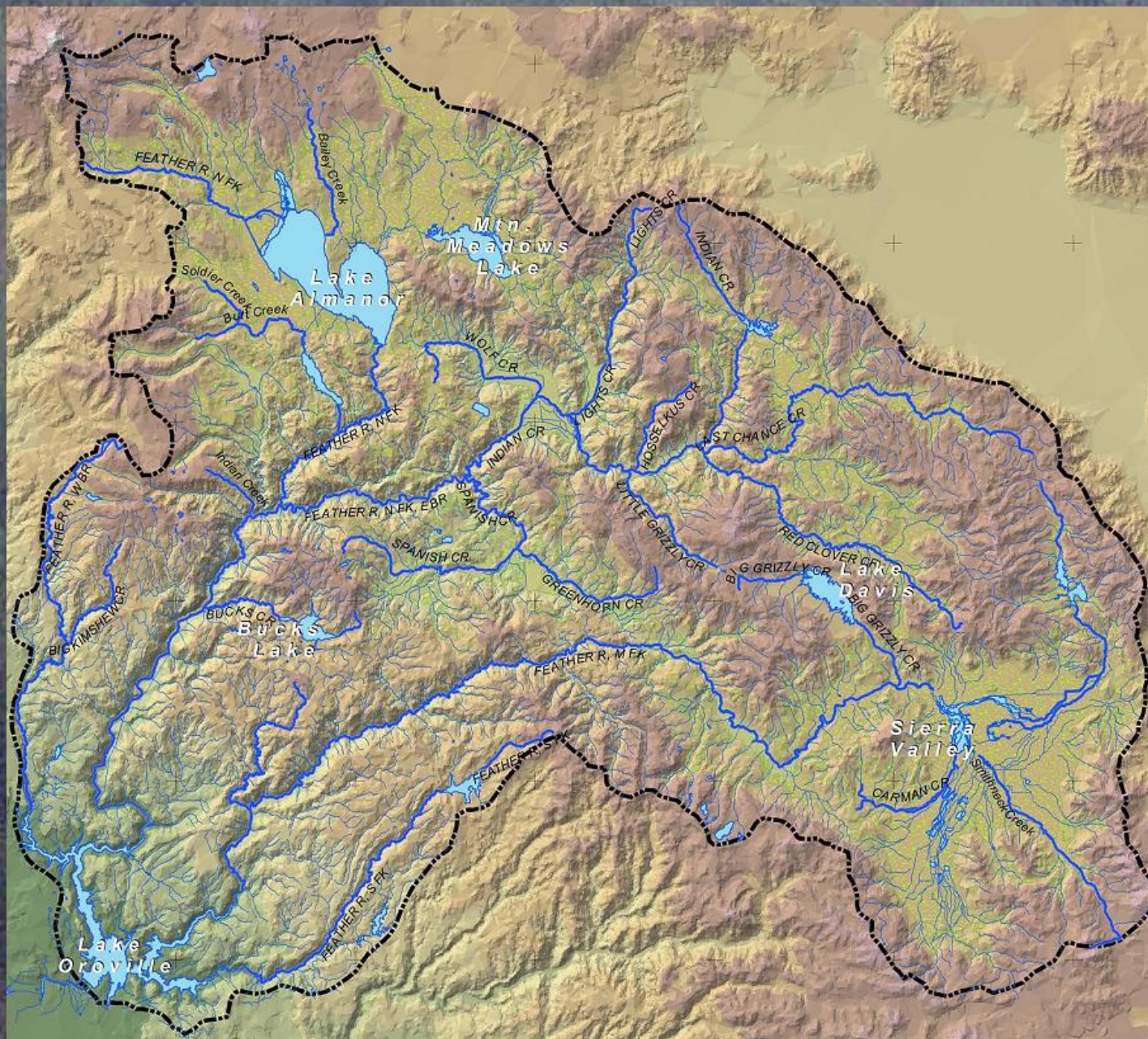
University of California, Davis





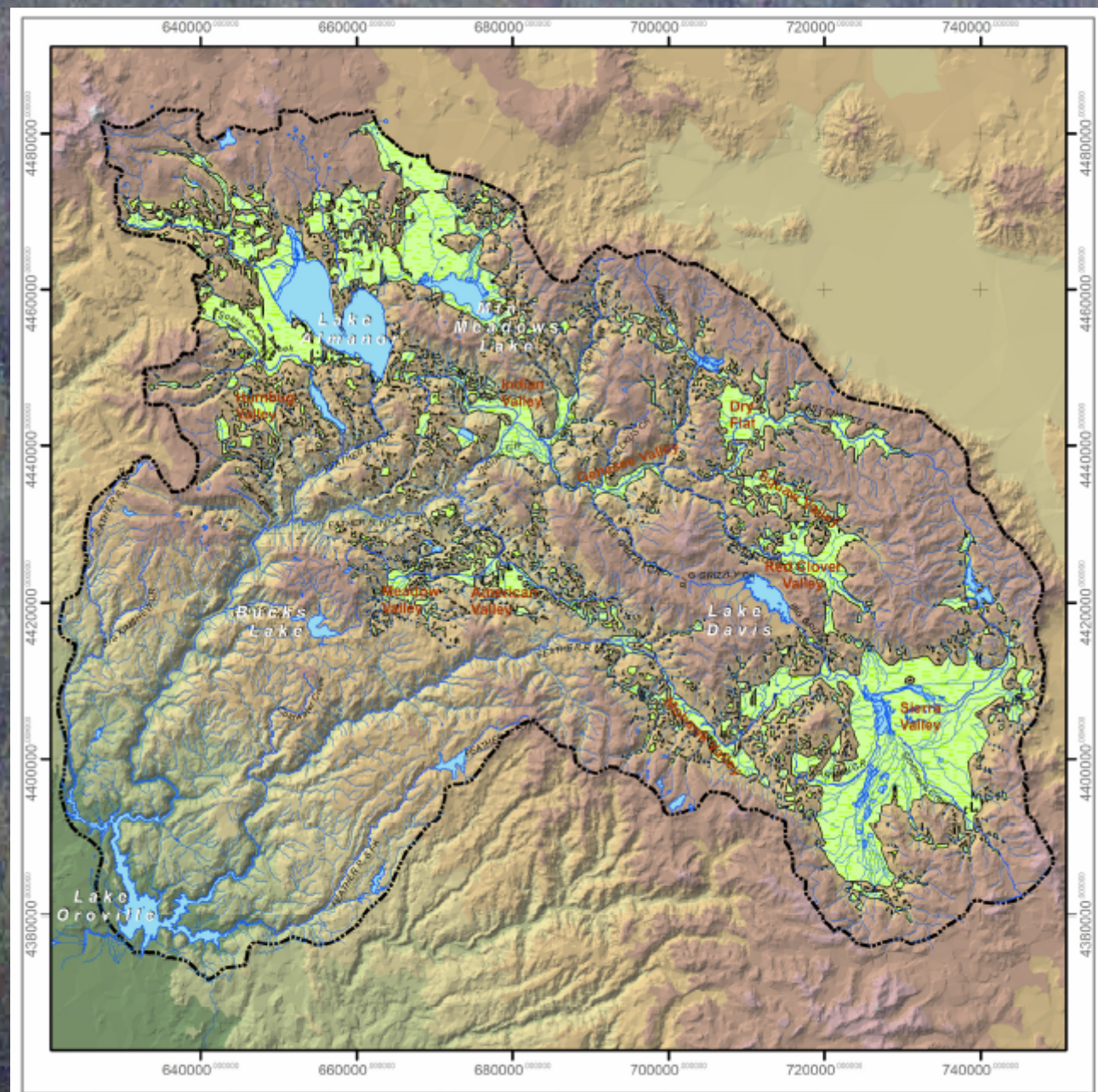
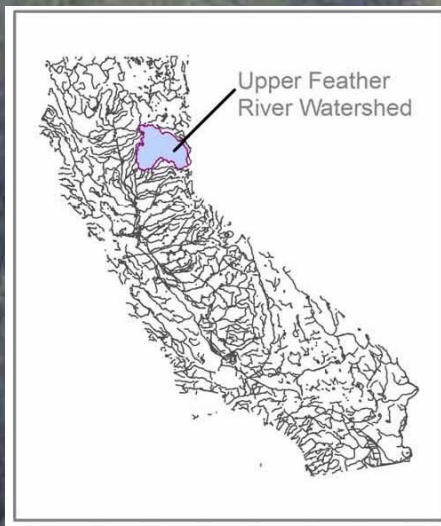
## *Meadow/Floodplains in Restoration*

### *Upper Feather River Watershed*





## Upper Feather River Alluvial Valleys





Little Schneider Creek  
“plug and pond” technique  
Mt. Hough RD, Plumas NF  
6/29/2006





**Thank you for  
watching my slide  
show!**

**Linda Blum**

**Quincy Library Group**

**[www.qlg.org](http://www.qlg.org)**

**[www.fs.fed.us/r5/hfqlg/](http://www.fs.fed.us/r5/hfqlg/)**